

SAN LUIS OBISPO

REP

AUG 16
THROUGH
SEP 15

2024 | 2025 SEASON



THE MUSICAL OF MUSICALS

(The Musical!)

Music by **Eric Rockwell**

Lyrics by **Joanne Bogart**

Book by **Eric Rockwell** and **Joanne Bogart**

**Sharynn & Jerry
Chirpich**

Show Sponsors

**Jeanne & Larry
Lovlace**

Show Sponsors

**Catherine & Richard
Lockett**

Show Sponsors

**Carl & Lulu Mitchell
Family Foundation**

Susan Minker

Show Director Sponsor

Jayne & Steve Devencenzi

Musical Director Sponsors

Donna & Larry Coffey

Choreographer Sponsors



Show Sponsors

Welcome to the theatre...
The Land of Make Believe
that startles and amazes!



Helping You Hear The Things You Love

Serving you, your parents and your children since 1978

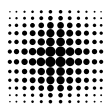
This I've
got to hear!



*Call us today
for your consultation*

805 541-1790

www.KarenScottAudiology.com



Karen M
Scott AuD

audiology • hearing aids

Thank you to our Sponsors

Vanguard Sponsor



Season Sponsors



SUBPLOT STUDIO



Better
Business
Financial



Photos by RyLo Media Design, Ryan C. Loyd



"Love is wonderful enough..."
- Jerry Herman

barbara-jo osborne

A R T I S T

FINE ART 805-215-4115 c

A Note from the Managing Artistic Director

Welcome to SLO REP's 78th season!

We invite you to embark on an extraordinary journey through the rich tapestry of theatre. This season promises to be a celebration of live theatre, featuring a lineup that will captivate and inspire.

Our season opens with *The Musical of Musicals (The Musical!)* a hilarious exploration of musical theatre genres that will dazzle our audiences. Next, brace yourself for the gripping thriller *Misery*, where suspense meets psychological drama in a tale that will keep you on the edge of your seat.

In early 2025, SLO REP will transport you to a historic recording session with *Million Dollar Quartet*, a rocking tribute to music legends Elvis Presley, Johnny Cash, Jerry Lee Lewis, and Carl Perkins. Following this, *The Cake* serves up a poignant story of love, acceptance, and the power of baking in a changing world.

I Hate Hamlet brings laughter and charm as we navigate the complexities of art and life, followed by the heartwarming classic *You're a Good Man, Charlie Brown*, which reminds us of the enduring innocence and joy of childhood.

Thank you for joining us on this theatrical adventure. We look forward to sharing these incredible stories with you and creating unforgettable memories together in our 78th season at SLO REP.

Enjoy the show!

Kevin Harris



Kevin Harris (Managing Artistic Director) grew up on the Central Coast performing with many local theatre groups, including the San Luis Obispo Little Theatre. He went on to study at the Tisch School at NYU and at the Atlantic Theatre Company. He was the Artistic Director of San Luis Obispo's first professional theatre, Centerpoint Theatre Group and the Theatre Manager of the Contemporary Art Center in New Orleans. He received his Master of Fine Arts in Directing from the University of Iowa and worked throughout the country and in the Middle East directing and as a collaborator on original plays. He has taught at the University of Iowa, University of Chicago, and has led dozens of workshops on *A Practical Handbook for the Actor* across the country. Kevin feels privileged to be part of bringing live theatre to San Luis Obispo.

Show Sponsors

Sharynn and Jerry Chirpich

Jerry and Sharynn Chirpich are both originally from Minnesota and were married in 1958. Jerry worked at Deluxe Corporation and Sharynn worked for Bank of America in the San Fernando Valley for 30+ years before retiring and moving to San Luis Obispo in 1994.

Jerry is an avid golfer and has competed in several major golf tournaments (with Sharynn as his caddy) in California and in Europe. He was president of the San Luis Obispo Country Club for two years and Sharynn served on various committees at the Club as well.



The Chirpichs have been ushers at the PAC for 20+ years and both volunteer at the Prado Day Center, Hope Chest Hospice, Womenade and Must Charities. In their spare time they also serve as volunteers at many Festival Mozaic events, housing visiting musicians in their home and work special events for Opolo Winery. However, SLO REP has always been of special interest to them. They have been season ticket holders for many years and Jerry serves on the Board of Directors. Sharynn has volunteered her time on our Gala Committee and is always by Jerry's side whenever help is needed.

Sharynn and Jerry are glad to live in such a great community and are grateful to SLO REP for the opportunity to sponsor *The Musical of Musicals (The Musical!!)*

**BRYCE
ENGSTROM
ARCHITECT**

(805) 235-3385

www.engstromarchitecture.com

Specializing in single and multi-family residential projects,
light commercial buildings, restaurants, and other tenant
improvement projects.

Show Sponsors

Larry & Jeanne Lovelace

Jeanne and Larry Lovelace originally met through a mutual friend at a party and discovered many common interests. Good thing, since they have now been married more than 48 years.



The couple enjoyed long careers in the Los Angeles area before relocating to Arroyo Grande several years ago. Larry jokes that he has “ketchup in his veins”, having worked almost exclusively in the hospitality and food service industries ever since graduating college.

Jeannie has a BS degree in Medical Technology and worked in pathology and chemistry before taking on bookkeeping for a local winery as her sunset job before retiring.

Avid adventurers, Jeanne and Larry enjoy traveling by bicycle, ships, riverboats, trains, planes and automobile. They have seen parts of this great planet that they never imagined they would see or experience. Foodies at heart, they also love trying new foods from different cultures. Life is an adventure for the Lovelaces and they savor every moment.

Larry and Jeanne are longtime supporters of live theatre in all its many forms – musicals, dramas, classics – they love it all. They are excited to be sponsoring *The Musical of Musicals (The Musical!!)* at SLO REP this summer and hope you enjoy the show!



Voted Best Retirement Home

New Times • Best of SLO County 2024



Independent & Assisted Living
55 Broad St., San Luis Obispo
805-543-2300 | villagesofslo.com

Garden Creek Lic# 405800467



Alzheimer's & Dementia Care
1234 Laurel Ln., San Luis Obispo
805-543-2350 | sydneycreek.com

Sydney Creek Lic# 405800577

Show Sponsors

Richard and Catherine Lockett

Richard and Catherine Lockett are longtime patrons of the arts on the Central Coast. Between them, they have sat on Boards of Directors for the Foundation for the Performing Arts Center, SLO Symphony and the PCPA Foundation. Richard is a proud member of the SLO REP's Board of Directors and both Cathy and Richard serve as Co-Chairs of SLO REP's Capital Campaign for *A New Stage*.



A nuclear engineer, Richard retired from PG & E where he worked at Diablo Canyon Power Plant for many years culminating with a "sunset assignment" in Washington D.C. and a stint working with Homeland Security. Catherine, a Speech/Language Pathologist and Resource Specialist, worked for San Luis Coastal Unified School District as an itinerant SLP for 12 years and then in the Preschool Early Education Program, which she developed with fellow SLP, Kathy Hamrick. She retired in 2002 to follow Rich to Washington D.C.

The Locketts love to travel and have visited all seven continents since Rich retired in 2006.



**FIBER
INTERNET
HOSTED VOICE**

Astound
Business Solutions
Powered by **DIGITAL WEST**

Jeff Buckingham
Jeff.Buckingham@astound.com
805.545.5100
www.digitalwest.com

Show Sponsors

Carl & Lulu Mitchell

"We enjoy seeing people happy and SLO REP makes people happy!"

- Lulu and Carl Mitchell





Visit our shop!

3566 South Higuera #100
San Luis Obispo, CA 93401

coastalpeakscoffee.com

Open 7 days a week
Mon–Fri: 6–6, Sat–Sun: 7–5

Get Outside

THE CENTRAL COAST GUIDE TO EVERYTHING OUTSIDE

**Summer/Fall 2024
Out Now!**

**Look for it on stands
and online.**

newtimeslo.com

NewTimes Sun



About the Authors

Eric Rockwell (Music and Book) is an alumnus of the BMI-Lehman Engle Musical Theatre Workshop, where in addition to creating *The Musical of Musicals* with Joanne Bogart, he developed the score to *A Little Princess* with lyricist Margaret Rose. He has also composed the scores to several musicals for children and is winner of the 2015 Shubert Fendrich Memorial Playwriting Contest for *Golly Gee Whiz*, a fun-loving homage to the Judy Garland-Mickey Rooney movie musicals of the thirties. The show won a National Youth Theatre Award for Outstanding Original Musical. Eric also created *Up To You*, a musical described as “*Mean Girls* meets *High School Musical*.” In addition to being nominated for an Innovative Theatre Award, it was also honored with a 2012 NYT Award for Best New Musical. Other shows created for young audiences include *Peter Pan*, a musical adventure, *The Trials of Alice in Wonderland*, based on the work of Lewis Carroll, *The History Mystery*, a musical time-travel adventure and most recently, *Rockin’ Robin Hood*. As a “serious” composer, Mr. Rockwell made his Carnegie Hall debut with a heartwarming Christmas carol entitled “The Annoying Drummer Boy.”



Joanne Bogart (Lyrics and Book) began her collaboration with Eric Rockwell at the BMI Lehman Engel Musical Theatre Workshop. For *The Musical of Musicals (The Musical!)*, published by Samuel French, they were honored with a 2004 Drama Desk nomination for Best Musical, as well as individual nominations for Best Music and Best Lyrics. In addition, the show received a 2004 Lucille Lortel nomination for Best Musical and a 2005 Drama League nomination for Best Musical. It ran off-Broadway for 583 performances and has had subsequent productions in regional theatres across America and internationally in London’s West End, Scotland, Australia and Canada. Ms. Bogart and Mr. Rockwell have worked together on several musicals over the years including their parody of Mickey and Judy musicals, *Golly Gee Whiz*, which won the 2009 National Youth Theatre Award for Outstanding New Musical. Ms. Bogart’s other collaborations with Mr. Rockwell include productions of *The Trials of Alice in Wonderland* and *David and Goliath*. In addition to acting off-Broadway and in regional theatre, Ms. Bogart has written for several shows on The Disney Channel.



Music by
Eric Rockwell
Lyrics by
Joanne Bogart
Book by
**Eric Rockwell &
Joanne Bogart**

Original New York production by
**The York
Theatre Company**
James Morgan,
Producing Artistic Director
Commerically produced in NYC by
Melanie Herman



THE MUSICAL OF MUSICALS

(The Musical!)

Directed by
Suzy Newman

Musical Direction by
**Lacey McNamara &
Minhui Lee**

Choreography by
John Keating

Costume Design by
Kaila Grenz

Wig Design by
Reneé Van Niel

Scenic Design by
Dave Linfield

Sound & Lighting Design by
Kevin Harris

Prop Design by
Suzy Newman

Cast of Characters

Big Willy, Billy, William, Bill, Villy Tim Stewart
June, Jeune, Junie Faye, Junita, Juny Edella Oroz Westerfield
Jidder, Jitter, Mr. Jitters, Phantom Jitter, Jütter Michael Tremblay
Mother Abby, Abby, Auntie Abby,
Abigail Van Schtarr, Fraulein Abby Kelly Ann Dunn*

**Ms. Dunn is a member of Actors' Equity Association, the Union of Professional Actors and Stage Managers in the United States, appearing under a Special Appearance Contract.*

Act 1

CORN!

In the Style of Rodgers & Hammerstein

Oh, What Beautiful Corn - Big Willy
I Couldn't Keer Less About You - June
I Don't Love You - Big Willy
Follow Your Dream - Mother Abby
Dream Ballet - Company
Sowillyquey - Big Willy
Clam Dip - Company
Daylight Savings Time - Company
Corn Finale - Company

A Little Complex

In the Style of Stephen Sondheim

Welcome to the Woods - Company
The Ballad of Jitter - Company
Jitter's Oath - Jitter
Birds - Jeune
Getting Away With Murder - Jitter
Billy-Baby / A Melody? - Jeune, Billy
Stay with Me, Jitter - Jeune, Billy
Jeune's Patter - Jeune
We're All Gonna Die - Abby
Complex Finale - Company

Dear Abby

In the Style of Jerry Herman

Dear Abby - Company
Take My Advice and Live - Aunt Abby,
Company
Show Tune - William, Junie Faye
Did I Put Out Enough? - Aunt Abby
Dear Abby Finale - Company

15 Minute Intermission.

Act 2

Aspects of Junita

In the Style of Andrew Lloyd Webber

Aspects of Junita / Prologue - Bill,
Company
I've Heard That Song Before - Junita
Sing A Song - Phantom Jitter
Junita's Recitative - Junita
Go Go Go Go Junita - Company
We Never Talk Anymore - Bill, Junita
A Sense of Entitlement - Company
Over the Top - Abigail Von Shtarr
Aspects Finale - Company

Speakeasy

In the Style of Kander & Ebb

Hola, Aloha, Hello - Jütter
Juny With a J - Juny
Color Me Gay - Villy
Just Don't Pay - Company
Easy Mark - Fraulein Abby
Round and Round - Company

Epilogue

Done - Company

THE VIDEOTAPING OR MAKING OF ELECTRONIC OR OTHER AUDIO AND/
OR VISUAL RECORDINGS OF THIS PRODUCTION AND DISTRIBUTING
RECORDINGS OR STREAMS IN ANY MEDIUM, INCLUDING THE INTERNET,
IS STRICTLY PROHIBITED, A VIOLATION OF THE AUTHOR(S)'S RIGHTS
AND ACTIONABLE UNDER UNITED STATES COPYRIGHT LAW. FOR MORE
INFORMATION, PLEASE VISIT:

<https://concordtheatricals.com/resources/protecting-artists>

Director's Notes

The fact that you've just read these eight words means that you have at least a passing interest in theatre, and since you've bought a ticket to a show with the word "musical" in the title *more than once*, leads me to believe that you either really dig musical theatre, or you love someone enough to accompany them here today. Maybe you got the time wrong for your dinner reservation and needed a (somewhat) comfortable seat for a couple of hours. Great. Any one of those things is more than enough to bring with you to watch these five delightful and talented humans perform for you.



If you're an aficionado of all things Broadway, *have a blast* with your fellow theatre nerds talking this out on the way home. If you've always thought that a 'Hammerstein' was a German building tool that you could also drink beer from, *no problem*. What you are about to watch is a culmination of thousands of shared experiences, the appreciation for a century of groundbreaking, gutsy artists, and most of all, the joy we all feel doing this for you.

I hope you have fun.

A handwritten signature in teal ink that reads "Suzy Newman". The signature is fluid and cursive, with a long horizontal line extending to the right.

Suzy Newman

Suzy Newman's first directing job was years ago at The Great American Melodrama, thanks to its founder and owner John Schlenker, who, among his greatest skills, has an extreme generosity of spirit. Suzy has continued to direct at the Melodrama and other area theatres. SLO REP directing credits include: *Lost in Yonkers*, *Greater Tuna*, *The Nerd*, *The Foreigner*, *Independence*, *The Drowsy Chaperone*, *Picasso at the Lapin Agile*, *Every Brilliant Thing*, *Vanya and Sonya* and *Masha and Spike* and the closing show of SLO REP's 77th season, *9 to 5: The Musical*.

About the Artistic Team

Lacey McNamara (Musical Director) Raised locally in a musical family, Lacey started playing piano at age 4 and never stopped! She holds a BA in Business Administration from ULV and is a certified Music Together® instructor. She has worked with nearly every theatre on the Central Coast including PCPA – Pacific Conservatory Theatre, The Great American Melodrama in Oceano, SLO REP, and CCAT in Cambria. Lacey and her wife, Danielle, own Lyrics and Melodies Studio in Los Osos where she teaches piano lessons. In her spare time, Mrs. “Mac” enjoys scuba diving, volunteering with youth at GALA Pride and Diversity Center, and being “Aunt Ducky” to her nieces and nephew. Quack, quack!



Minhui Lee (Musical Director/Pianist) Minhui Lee is very excited to be joining *The Musical of Musicals* at SLO REP. Minhui is a NYC-based music director and composer hailing from Seoul, South Korea. She has worked with Lincoln Center’s Broadway Future Songbook Series, MCC Theater, Oregon Cabaret Theatre, and more. Select credits include *Baby* (Drama Desk Nominee), *Caroline, or Change* (Audelco Winner), and *Kinky Boots* (Fulton Theatre). Ms. Lee holds an MFA from NYU Tisch. Love to Mom. This is for you. minhuilee.com.



John Keating (Choreographer) John Keating is a Minnesota native, who earned his BFA in Musical Theatre from the University of Wisconsin - Stevens Point. He is currently the Artistic Director at The Great American Melodrama where he most recently directed *Sherlock Holmes: The Final Problem* and *Lumberjacks in Love*. John has performed regionally with PCPA – Pacific Conservatory Theatre, Cumberland County Playhouse, Artists’ Ensemble Theatre, The Chanhassen Dinner Theatres, Oregon Cabaret Theatre, Prather Entertainment Group and The Great American Melodrama. In Chicago, John was seen at The Black Ensemble Theatre, The Goodman Theatre, Emerald City Theatre, Porchlight Music Theatre (Jeff Awards nominee as Best Supporting Actor in a Musical), Griffin Theatre Company, Chicago Commercial Collective, Drury Lane Theatre, About Face Theatre and The Paramount Theatre. John is writing two New Musicals with his writing partner and brother, Marshall. He would like to thank SLO REP, the creative team and incredible cast for this opportunity.



About the Cast

Kelly Ann Dunn* (Abby) is very excited and thankful to be back in her home state making her debut at SLO REP with this wonderful cast and crew! Regional credits include: *Big Fish* (Sandra Bloom), *The Robber Bridegroom* (Rosamund), *The Musical of Musicals* (June), *Boeing Boeing* (Gloria), *Grease* (Jan), *Beauty and the Beast* and *Disaster!* She enjoys her work as a Talent Agent by day as well as running, coffee, and good people. Website: kellyanndunn.co IG: [kelly.ann.dunn](https://www.instagram.com/kelly.ann.dunn)



Tim Stewart (Billy) is thrilled to be returning to the Central Coast and is very excited to be back at SLO REP! He was previously seen on this stage in *9 to 5 – The Musical* (Franklin Hart), *The 39 Steps* (Richard Hannay), *The All Night Strut*, and *The Drowsy Chaperone* (Robert Martin). He recently appeared at the B Street Theatre in Sacramento as Nikola Tesla in *The Prince of Lightning* and Chris/the Inspector in *The Play That Goes Wrong*. He has performed at theatres around the country including Sacramento Theatre Company, Sierra Repertory Theatre, PCPA – Pacific Conservatory Theatre, Utah Festival Opera, SLO Repertory Theatre, and The Great American Melodrama, to name a few. He is filled with gratitude to be back doing what he loves now that we know what a world without theatre looks like and 2020 is thankfully behind us. Love always to his family, chosen family, and Robert.



**Ms. Dunn is a member of Actors' Equity Association, the Union of Professional Actors and Stage Managers in the United States, appearing under a Special Appearance Contract.*



MAMA'S MEATBALL

Mama's Meatball is everyone's favorite cozy Italian restaurant! Located inside the Creamery Marketplace, we offer authentic, homemade Italian dining and catering with slow-simmered sauces and fresh, locally sourced ingredients.



"Mama", Chef Nico's Mom, learned to bake as a girl in Italy and has been whipping up baked goods by hand for nearly 53 years.



BANQUET ROOM · PRIVATE DINING · CATERING

mamasmeatball.com

MENU

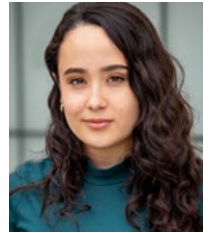
150 Higuera Street, Ste 130, San Luis Obispo | (805) 544-0861 | Open Tues-Sun 11am to 9pm · Closed Mondays

About the Cast

Michael Tremblay (Jitter) is an L.A. native and received his education at UCLA, CSUN and CSLA. Michael has been sharing stories on the Central Coast as an educator and actor/singer since 1990. He has appeared in numerous PCPA – Pacific Conservatory Theatre productions, most recently in Shakespeare’s *Henry V*. Notable performances at PCPA include: *Julius Caesar* (Julius Caesar), *Mamma Mia!* (Harry Bright), *Legally Blonde* (Professor Callahan), *Caroline, or Change* (Mr. Stopnick), *Ragtime* (Father), *Much Ado About Nothing* (Leonato), *Sweeney Todd* (Pirelli), *A Midsummer Night’s Dream* (Oberon/ Theseus), *1776* (Edward Rutledge) and *Camelot* (King Arthur). Other local theatre appearances include: Centerpoint Theater Group (John Wilkes Booth in *Assassins*), Lompoc Civic Theater (Charles Condomine in *Blithe Spirit*) and Opera SLO (King Melchior in *Amahl and the Night Visitors*.)

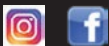


Edella Oroz Westerfield (June) is a Central Coast native and recent graduate of the PCPA Conservatory Program. Some of her favorite shows include *Wolf at the Door*, *The Clockmaker’s Daughter*, *American Mariachi* and *Murder in the Peacock Lounge*. She is so excited to be making her SLO REP debut and to be a part of this amazing team!



**Voted BEST BAR and
BEST MAC ‘N
CHEESE
in SLO County!**

**Enjoy our signature
dishes and drinks before
and after the show!**



**1117 Chorro Street • Downtown SLO
(805) 544-7433 • BlackSheepSLO.com**



About the Production Team

Director	Suzy Newman
Musical Director	Lacey McNamara
Musical Director/Pianist	Minhui Lee
Choreographer	John Keating
Stage Manager	BreAnne Fawcett
Assistant Stage Manager	Robert Frederick Taylor
Costume Design	Kaila Grenz
Wig Design	Reneé Van Niel
Prop Design	Suzy Newman
Scenic Design	Dave Linfield
Sound & Lighting Design	Kevin Harris
Set Construction & Painting	Dave Linfield, Lisa Langere, Greg Peters, Bob Rice, Larry Bolef, Valerie Pallai

Bree Fawcett (Stage Manager) started her career in theatrical productions working on film and television sets in North Hollywood, the U.K., and L.A. area. After graduating from U.K.'s National Film and Television school's fall course, she moved with her husband Nicholas to the beautiful Central Coast. Bree has been the stage manager for several SLO REP shows over the last year including *Stones in His Pockets*, *Once*, *The Thanksgiving Play* and *Beehive – The 60's Musical*.



**Fireplaces &
Outdoor Heaters**



PACIFIC
E N E R G Y
C O M P A N Y



**Solar PV
& Storage**

Visit our Showroom today!

805-544-4700

2121 Santa Barbara Ave
San Luis Obispo, CA

AlterYourEnergy.com

About the Production Team

Robert Frederick Taylor (Assistant Stage Manager) appeared in last season's *9 to 5 – The Musical* and is happy to be back on the Central Coast. A New Jersey native who now resides in Sacramento, Mr. Taylor earned a BFA from Montclair State University, Montclair, NJ. Select Regional credits include SLO REP, Sierra Repertory Theatre, Utah Festival Opera and Musical Theatre, Springer Opera House, Cardinal Stage, Prather Entertainment Group, Ocean City Theatre Company, Park Playhouse. All my love always and Thank You to God, SLO REP, and my Tim. Always for my Mother, Grandmothers, Ree, Uncle Bob and Poppy.

Kaila Grenz (Costume Design) is thrilled to be returning to San Luis Obispo for her debut show with SLO REP! She is passionate about costumes, holds a BA in Production Arts and Design from the Royal Conservatoire of Scotland and is a graduate of PCPA's technical theatre program. Kaila has a diverse technical background and has worked in various costume roles including cutter/drafter, wardrobe supervisor, and wig lead for live performances and films on the Central Coast and abroad. She currently serves as a Lecturer and Costume Assistant at UC Santa Cruz in the Play Performance and Design department and enjoys designing custom dancewear in her spare time. Much love to her family, mentors, and friends for their guidance and support throughout her journey.

Reneé Van Niel (Wig Design) designed the costumes and wigs for last season's *9 to 5 – The Musical*, the costumes for *The Thanksgiving Play* and the fabulous wigs for *Beehive – The 60s Musical*. Previous shows at SLO REP include *The All Night Strut*, *Million Dollar Quartet* and *Steel Magnolias* as costume designer and *The Marvelous Wonderettes* as Wig Designer. She has worked as a costume/wig designer for The Great American Melodrama for many years. Prior to moving to the Central Coast, she toured throughout the U.S. with Theater League for five years as a Costume Designer and Wardrobe Supervisor and designed throughout the Los Angeles Area when not out on the road.

Dave Linfield (Scenic Design) has designed and built nearly all of SLO REP's Mainstage productions over the past 15 years. The theatre bug bit him in 1990 when an audition notice for a community theatre production caught his fancy. Over the years, he migrated from performing onstage to working behind the scenes, embracing technical stagecraft as his true calling. Dave's educational background in graphic design and his work experience in retail display and housing construction have blended together in distinctive ways to fuel his passion for designing and building sets.

The Show MUST Go On!

Unforgettable Characters. Extraordinary Stories. Since 1947.

SLO REP is grateful to ALL of our generous donors. Each and every gift is important to us. Due to space limitations, this list recognizes donations of \$100 or more that have been pledged or received in support of the 2024-2025 Season through July 23, 2024



Every effort has been made to ensure the accuracy of this list. If you have any questions about your listing, please contact Patty Thayer at patty@slorep.org.

Season 2024-2025 Donors

Diamond Circle (\$25,000+)

City of San Luis Obispo

Emerald Circle (\$10,000+)

Astound Business Solutions,
Powered by Digital West
Catherine & Richard Luckett*
Susan Minker*
Pam & Mitch Nichter
Ann Robinson*

Angels (\$5,000+)

Anonymous
Better Business
Financial Solutions
Sharynn & Jerry Chipchich
Marty Claus & Chip Visci
Diane Clausen
Kathy Coull
Deon Dunaway
Fidelity Charitable Fund
Hotel San Luis Obispo
Gina Kirk
Bette Kulp
KSBY
Jeanne & Lawrence Lovelace
Carl & Lulu Mitchell
Family Foundation
New Times
Carol MacCurdy &
Tom Nuckols
JAMBA, Linda Ozawa
Olds & Jeff Olds
RyLo Media Design,
Ryan C. Loyd
Joan G. Sargen*
Michael & Maryellen Simkins
Subplot Studio
Jane and George Roach

Rotary Club of SLO de Tolosa*
Schwab Charitable Fund

Executive Producers (\$2,500+)

Gary Lawson & Tom Ammon
Diana Beaudry*
Heather Billing
Central Coast Funds
for Children*
Donna & Larry Coffey
Jayne & Steve Devencenzi
Wendy & Keith George
Jerry Boots &
Cricket Handler
Brenda Hock
Karen S. Kolba, MD
Harold J. Miossi
Charitable Trust*
Douglas & Shannon Murphy*
Barbara-Jo Osborne*
John Ozanich
Promotional Concepts,
Jamie & Kevin Magon
Jay & Nicole Raftery
Debbie Wacker

Producers (\$1,000+)

Libbie Agran
American Riviera Bank
Carol & Ray Boche
Cricket Handler &
Jerry Boots
Coastal Peaks Coffee
Deluxe Corporation
Mary Reese & Robert DeVries
Sharon & John Dobson
Kate Hines & Bryce Engstrom
Stephen & Misha

Freyaldenhoven
Sarah Garcia
Jeanie & Andy Greensfelder
Luanne & Fabrizio Griguoli
Brenda Hock
Gail Kammermeyer
W. Edward & Ingrid W. Kelly
Margaret King
Bernie & Ed Kurtz
Lisa Langere & Family
Dianne N. Long
Claretta & Roger Longden
Rodger & Kathy Mastako
Valerie Pallai
Clint & Esmeralda Parker
Mary Qualls
Amy & Zach Reagle
Marcia Scott
Ellie & Jermaine Washington
Tom Weiss

Directors (\$500+)

Marcy Adams
Craig & Susan Armstrong
Dave Christy
Judy Hemenway
& Jon Fellows
Daniel Freeman
John & Mary Frey
Christine & Richard Greek
Luanne & Fabrizio Griguoli
Patti & Jerry Hempenius
Ermina Karim & Erik Justesen
Daniel Levi
Denise Taylor & Neal
MacDougall
Philip Richard Morris
Dr. Bill Plummer

Amy & Zach Reagle
Gigi & James Roark
Carol & Bill Rust
Jeff Stein & Linda Seifert
Tom Martin & Mitch
Terkildsen
Hal & Priscilla Thilmony
Janice Fong Wolf

Stars (\$250+)

Ken & Marie Allen
Michelle Gaudette &
Jim McConaghy
Bryan & Kathy Geyer
Carol & Bob Grosse
Sharon & Jerry Melson
Kevin Casey & Mike Mesker
Don & Ricki Pace
Kimberly Perez
Susan Piel
Laura Slaughter*

Sally H Young

Stage Managers (\$100+)

Dr. Richard Adams
Krystyna Amaral
Rebecca & Joseph
Anastasio
Mitchell Blum
Linda Butler
Carlyn Christianson
Maria Ciamaichelo
Kathleen & Phil Cohl
Edna Marie Cole
Cee Cee Cuccaro
Elena & Joseph Demartini
Sharon Deos
Jose Luie Flores and
Carole Flores
Mary Kay Harrington
Dwayne Head
Deborah Adams &
Michael Howard

Robert & Darrylin Huttle
George & Marie Lepper
George Lusich
Cathy Marvier
Christy & Mike Palmer
Ms. Judith Resnick
Julie Rodewald
Heather Smith
Lynn & Jon Sterner
Linda & Thomas Stuermer
Patty & David Thayer
Ken & Nancy Thompson
Elaine & Bert Townsend
Anamaria & Nina Unger
Sheila & Al Vossler
Nancy Walter
Nancy & Jerry Weber
Tom Cash & Danna Weidner
Marta & John Zanghi
Ray Ramirez &
Gregory Zocher

For a list of contributors to our Capital Campaign for A New Stage, please visit our website at slorep.org/a-new-stage/



*Indicates all or a portion of their donation was made in support of ACT Education.

Leave a Legacy of Live Theatre for the Future

Everyone can leave a legacy. Great or small, planned gifts through your financial or estate plans make a big difference. Your future gift may provide tax benefits for you or your loved ones and will ensure that the enjoyment and enrichment you've experienced at SLO REP is available to our community for years to come.

Please join us in a round of applause for our Legacy Society members whose foresight and generosity will keep live theatre going strong in downtown San Luis Obispo for years to come.

Legacy Society

Concettina* & Allyn* Arnold
Sharynn & Jerry Chirpich
Jeff McKeegan & Steven deLuque
Kate Hines & Bryce Engstrom
Ray* & Jaime Hatler*
Brenda & Jules* Hock
Lisa Langere
Amy Hart & Steven Lloyd-Moffett
Jeanne & Lawrence Lovelace

Catherine & Richard Luckett
Pam & Mitch Nichter
Wilda Rosene*
Gail Ryff
Michael & Maryellen Simkins
Robert Lahr & Bruce Stuart*
Ben* & Pat* McAdams
William F. Mooney* & Wilbur Wooster*
*deceased

Choosing the right planned gift depends on your personal circumstances and goals. Please consult your financial advisor, then contact us about joining SLO REP's Legacy Society. Benefits include exclusive invitations to special events, priority seating for all shows with personal assistance from SLO REP staff and a listing in our playbill. If you've already included SLO REP in your future plans, please let us know. We want to honor and celebrate your generous gifts TODAY!

Building the Future

Thanks to the foresight, generosity, and determination of Dr. Bernhard Singen, SLO REP has established an Endowment Fund for the future of live theatre in downtown SLO. This fund will grow as we grow, providing security and future funding, ensuring that this organization continues to thrive for years to come.

Endowment Fund Donors

Catherine & Richard Luckett
Pam & Mitch Nichter
Dr. Bernhard Singen

For more information about how you can build the future of live theatre in downtown SLO, please contact **Patty Thayer** at (805) 592-3190 or patty@slopep.org.

Special Thanks

Playbill Sponsors

Anonymous
Catherine & Richard Luckett

Guest Artist Hosts for this Production

Heather Billing
Elizabeth Frost
Denise Taylor and Neal MacDougal

Artist Hospitality Sponsors

Pam & Mitch Nichter
Ann Robinson

Empleo Street Headquarters Renovation Assistance

Bryan Wallace



Contact

Box Office: (805) 786-2440
boxoffice@slorep.org
Business Office: (805) 781-3889

Box Office Hours

Wed-Fri 3 pm – 6 pm
Show Saturdays 3 pm – 5 pm
Will Call open 1 hour before
every show

Downtown Venue Address

888 Morro Street
San Luis Obispo, CA 93401

Empleo Street Headquarters

3533 Empleo Street
San Luis Obispo, CA 93401

Mailing Address

PO Box 122
San Luis Obispo, CA 93406

Board of Directors

Officers

Pam Nichter, President
Diane Clausen, Vice-President
Debbie Stewart, Treasurer
Michael Simkins, Secretary & Past President

Members

Jay Beck
Jerry Chirpich
Keith George
Richard Luckett
Kevin Magon

Susan Minker
Jeff Olds
Chip Visci
Ellie Washington
Jonathan York

Staff

Kevin Harris
Managing Artistic
Director
Patty Thayer
Director of
Development & Capital
Campaign
Suzy Newman
Production Manager

Kerry DiMaggio
Education Director
Rachel Tietz
Assistant Education
Director

Shannon Peters
Assistant Education
Director & Empleo
Office Manager

Dave Linfield
Technical Director/
Scenic Designer

**Lester Wilson, Isaac
Capp, Carolyn Peters
Natalie Mara
...and more!**
ACT Teaching Artists

Brian Lampert
Volunteer Coordinator
& Front of House
Manager

**Cynthia Ford, Sonya
Jackson, Abe Lincoln,
Natalie Mara, Carly
Medina, Amanda
Thayer**
Assistant House
Managers

**Carey Blauvelt
Aaron Jackson**
Box Office Staff

Mission

SLO REP strengthens theatre's cultural influence and enriches the Central Coast by producing professional theatre, nurturing artists and providing theatre education for children and adults.

Our Belief

Live theatre's powerful storytelling connects people in ways that open the mind, nourish the soul and illuminate our shared humanity.

Vision

To be a nationally recognized regional theatre that:

- Produces professional theatrical productions in a state-of-the-art facility.
- Strengthens the cultural vitality of the Central Coast, entertains audiences, nurtures artists, and cultivates future generations of theatre enthusiasts.
- Creates a strong and sustainable economic impact, attracting residents and visitors to downtown San Luis Obispo.

Our Commitment

Theatre plays a vital role in our culture and our community and has a responsibility to enact positive change through its work, practices, educational programs and policies. We at SLO REP are committed to diversity, equity and inclusion in all aspects of our work.

To learn more about our commitment to you, our community and to ourselves, please visit our website at slorep.org

Land Acknowledgement: San Luis Obispo Repertory Theatre acknowledges with respect that the place we work and gather is located on the traditional land of the Northern Chumash people.

Artwork: Subplot Studio
Photos/Video: RyLo Media Design, Ryan Loyd

SLO REP
is a proud
member of:





BY BRIAN FRIEL



UBU'S
OTHER SHOE
STAGED READINGS

SAN LUIS OBISPO REPERTORY THEATRE
Michael Siebrass Artistic Director

**UP
NEXT**

"This comedy serves up a postmodern Fortinbras, a bewildered Horatio, a blossoming Osric and lots of tasty ghosts." – LA Times

SEPTEMBER 20-21, 2024

MISERY

By William Goldman

Based on the novel by Stephen King

**COMING
SOON**

"There are no lulls in famed screenwriter William Goldman's 90-minute stage adaptation of the Stephen King story..." – WNBC NY

OCTOBER 11-27, 2024